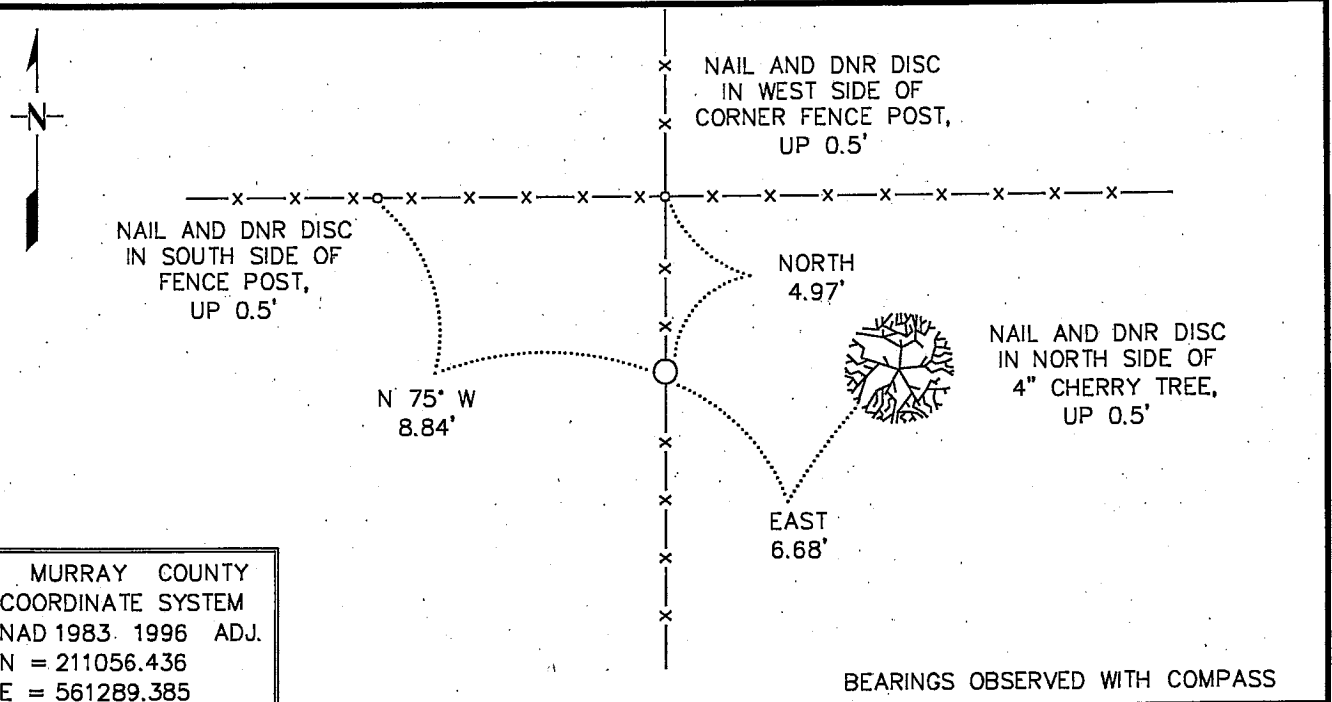


CERTIFICATE OF LOCATION OF GOVERNMENT CORNER

NORTH QUARTER Corner of Section 21, Township 108 N, Range 39 W
5th Principal Meridian, State of Minnesota, County of MURRAY

At the corner location shown on the sketch:

- On 7/29/2009 found a AN OLD WOOD CORNER FENCE POST, LYING ON THE GROUND
DATE AND THE HOLE WHERE IT ONCE STOOD
 - left monument as found, lowered monument, removed monument (explain)
- On 7/29/2009 Placed a 3/4" X 24" REBAR WITH PLASTIC CAP STAMPED
DATE "MN DNR LS 17003", UP 0.2', IN OLD CORNER POST HOLE



MURRAY COUNTY
COORDINATE SYSTEM
NAD 1983. 1996 ADJ.
N = 211056.436
E = 561289.385

BEARINGS OBSERVED WITH COMPASS

Statement of evidence for this corner location is on back of this page. 9/2/2009
TRA00706.00.00.01

I certify that this document was researched and prepared by me or under my direct supervision.

SIGNATURE *Russ W. Sheppard* DATE 9/14/09 License Number 17003

Title: Land Surveyor Professional Engineer County Surveyor County Engineer

North Quarter Corner of Section 21, Township 108 North, Range 39 West

The DNR Division of Lands and Minerals contacted the following for survey information:

Minnesota History Center in St. Paul
Murray County Recorder's Office
Murray County Highway Engineer's Office
Zieske Land Surveying, Inc. of Windom
Bueltel-Moseng Land Surveying of Marshall

1861 U.S. General Land Office notes, obtained from the Minnesota History Center, show the corner marked with a wood post with pits and mound.

The corner is shown:

0.88 chains (58.08 feet) West of a bend of Plum Creek, 7 links (4.62 feet) wide, runs north and south

1901 Surveyor's Record Book A, Pages 240, 255 and 260, obtained from the County Recorder's Office, contains a survey by D.L. Bighorn, Redwood County Surveyor, which record was made on June 12, 1915, by J.R. Johnston, Murray County Surveyor, from original plat on file in the office of the Town Clerk of Holly Township. Survey shows corner but a description of what kind of monument was found or set is not given. The corner is shown:

2648.5 feet from the northeast corner of Section 21

2648.5 feet from the northwest corner of Section 21

The above information is also contained in a Surveyor's Record Book, obtained from the County Highway Engineer's Office.

2009 July 29, the DNR Division of Lands and Minerals roved to the area of the corner with RTK GPS and found an old wood corner fence post for fences north, south, east and west lying on the ground. Further searching revealed the hole where the post was set in the ground. A 3/4 inch by 24 inch rebar with a plastic cap stamped "MN DNR LS 17003" was set in the post hole and was found to be:

5.0 feet south of a newer wood corner fence post with fences north, south, east and west

67 feet west of the centerline of Plum Creek, which is 5 feet wide

2642.05 feet from the northeast corner of Section 21

2649.61 feet from the northwest corner of Section 21

5.58 feet north and 3.76 feet east of the lost position

Also, scanned a 12 foot diameter area with an electronic metal detector the center being the post hole and the only metal attraction that was found was wire.

Also, probed a 10 foot diameter area at 6 inch increments, the center being the post hole, to a depth of 1 foot in search of a stone but did not find one.

Consulted with LaMoine Meyer, Holly Township Clerk, about the 1901 survey by D.L. Bighorn, and he said that the survey information that the Township has is the same as what's on file at the County Recorder's Office.

Analysis of the above information led the DNR Division of Lands and Minerals to conclude that the 3/4 inch by 24 inch rebar with a plastic cap stamped "MN DNR LS 17003" set in the hole of the location of a former wood corner fence post marks the obliterated location of the corner.